



**Leander Road, Brixton, SW2**

3 bedroom flat - conversion for sale

**£725,000**

Leasehold

## Property Details

An impressive three double bedroom garden flat set within one of the sought-after Victorian townhouses on Leander Road, a popular residential street close to the centre of Brixton and Brockwell Park. The reception room is a vast open-plan space with bi-fold doors out to a large private garden, enjoying all day sun. The reception room is generous with space to lounge and dine, flowing around into the kitchen, flooded with natural light and further doors out the garden. The kitchen is contemporary with all you need in terms of mod cons and white gloss cabinetry with plentiful storage. To the front, the first of three bedrooms is an attractively neutral room with a large bay window. A contemporary bathroom separates the bedrooms, with bath and rain head shower plus storage and heated towel rail, finished in trendy blue tiling. The second of the three double bedrooms opens out via French doors to a private courtyard the perfect space to dress as a pretty oasis. Still a spacious double, the third bedroom shares courtyard views and if not required for a tenant would be an ideal home office or guest room. The cellar offers further storage, the roof was redone last year plus permit parking as well as free parking 100 yards away.

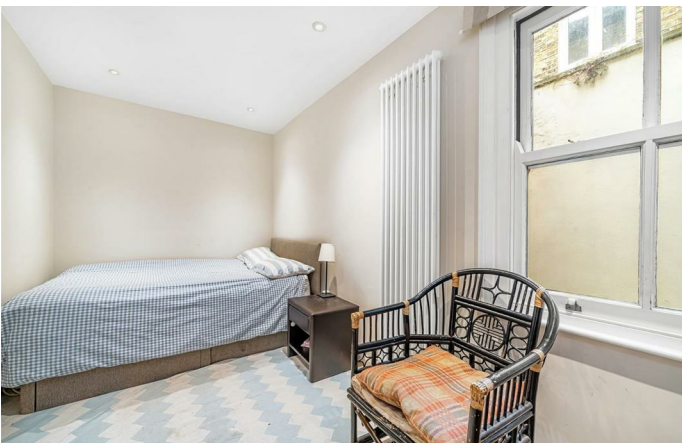
Council tax band C

EPC rating C (73)

## Features

- Three double bedrooms
- Private South-East facing garden
- Victorian conversion
- Over 1,025 square feet of internal space
- Sought-after residential street
- Central Brixton a fifteen-minute walk
- Brockwell Park a three-minute walk
- Herne Hill a ten-minute stroll through the park
- Large brand supermarket in five minutes
- Chain-free





Leander Road, Brixton, SW2

**Leander Road, SW2**  
**3 Bedroom Flat**

APPROXIMATE TOTAL INTERNAL AREA: 1029 SQ FT / 95.6 SQ M



While we try our very best, floor plans are produced as a guide only and we take no responsibility for the precise accuracy with which any property is represented.



Leander Road, Brixton, SW2

